

Seed Garden It's need and importance

JatrophaWorld Miami

10th -11th of June 2008

Hilton Miami Downtown



About ScanFuel



***ScanFuel is a producer of vegetable oil from
Jatropha and Oil Palm
with own managed plantations in Ghana.***

Company Highlights:

- Jun 07 – Incorporated and established pilot plantation
- Nov 07 – Executed 1m ha Land Lease Agreement
- Dec 07 – Seed funding & investment agreement (\$12m)
- Jan 08 – Subsidiary in Ghana established.
- Feb 08 – Jatropha Seed Garden established
- May 08 – Field Operations initiated.

Jatropha Risks/Challenges



Upsides and Downsides

GEXSI

Risks and Challenges

- Jatropha is a wild species, not a domesticated industrial crop.
- Yield expectations are very uncertain due to inhomogeneous results and the lack of improved seed material; research on Jatropha and plant breeding has just started.
- Jatropha will not produce good yields in poor conditions; there are trade-offs between rehabilitation of wastelands and maximisation of oil production.
- Harvesting is very labour-intensive and may jeopardise the economic viability.

Industrializing the specie is a prerequisite for success.

Mechanized harvesting must be developed to ensure long-term sustainability for the industry.

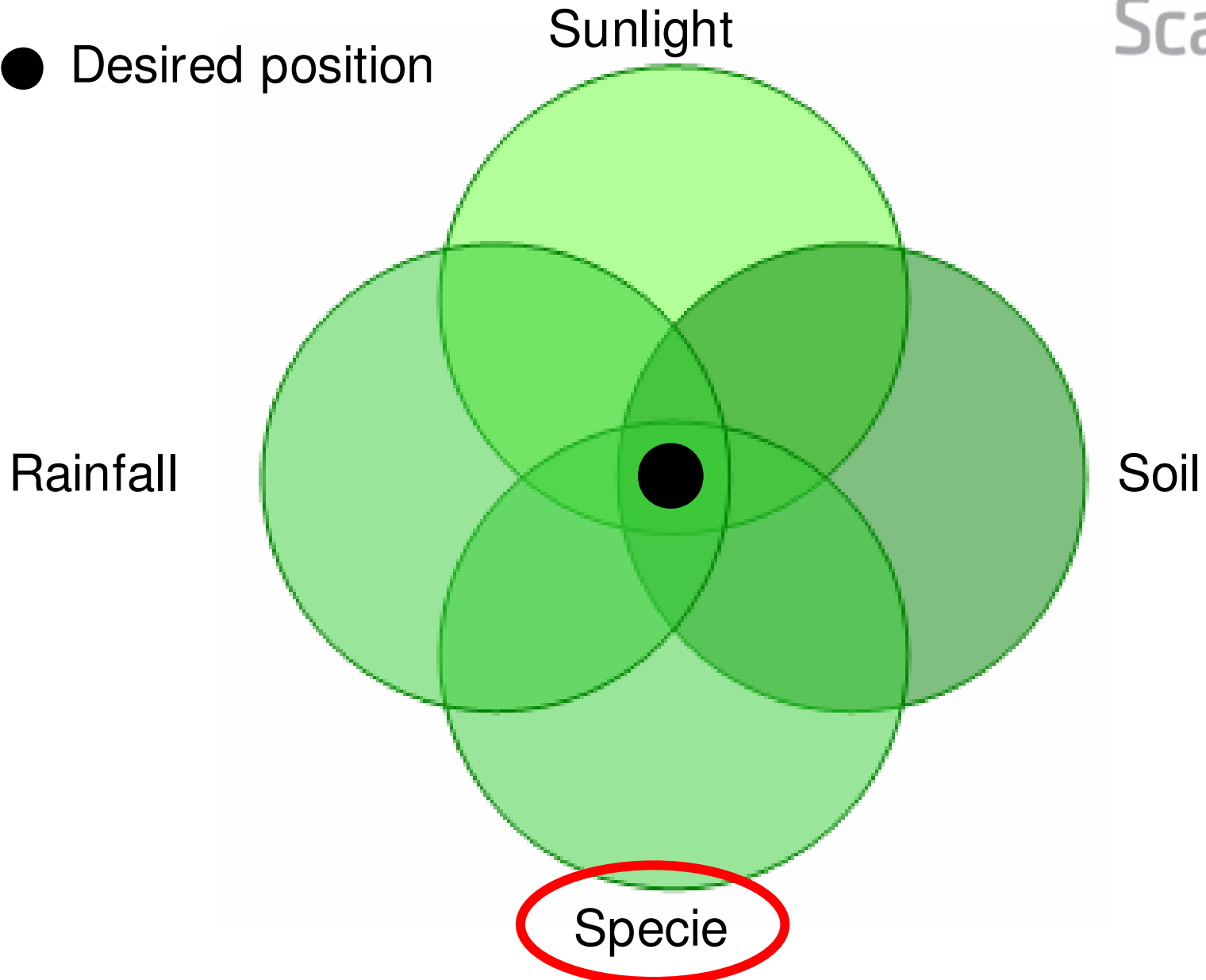
Source: Global Market Study on Jatropha by GEXSI on behalf of WWF.

ScanFuel Strategic Model



ScanFuel

● Desired position



Status of Jatropha Industry today



ScanFuel



Why invest in a Seed Garden?



- Ask yourself the following question:
- If you are Jatropha developer and it takes three years for your plants to mature – wouldn't you like to know as much as possible about your crop as early as possible?
- Of course the answer is **YES.**
- Well, that's why you need a Seed Garden.

If not, your life will be like a box of chocolate – sweet or sour and most probably just sour!

Seed Garden and it's impact

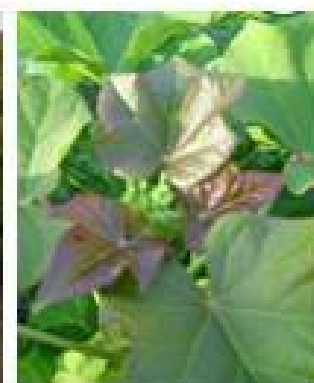
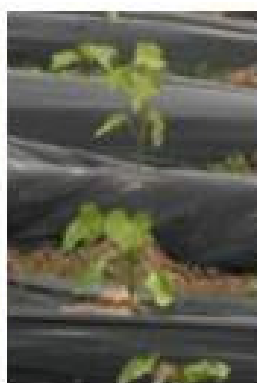
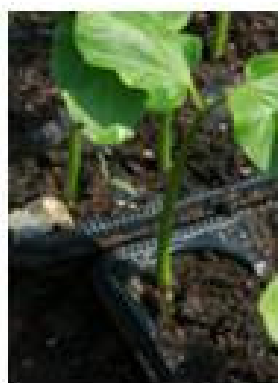


- ❑ Due to our Jatropha Seed Garden, we expect at least 120% higher yield on our commercial plantations compared to not having a Seed Garden.
- ❑ We have imported seeds from around the world to test which jatropha variety which performs in our environment and have selected the best specie for our commercial plantation.
- ❑ A Seed Garden of 10-15 hectares will produce enough seeds or cuttings to re-plant more than 30-50.000 hectares annually.
- ❑ For business planning purposes, the records we collect from the seed garden are vital inputs for our planning team to project future yield.

Seed Garden Schedule/Plan



2008	March				April				May				June				July			
Week	1	2	3	4	5	6	7	8	9	10	11	12	13	14	15	16	17	18	19	20
Seedling phase	■	■	■																	
Transplant				■																
Growth					■	■	■	■	■	■	■	■								
Flowering													■	■	■					
Imature Fruits															■	■	■	■		
Mature Fruits																		■	■	
Harvest																			■	■



ScanFuel Seed Garden Development



Excellent growth



ScanFuel



Rain is **not** always good!!!



ScanFuel Research Partners



THE UNIVERSITY OF GHANA
Institute of Agriculture Research
College of Agric. & Consumer Sciences
Legon, Accra, Ghana



PLANT SCIENTIST FROM DED
Starting fall 2008 on a 36 month
research programme with the objective
to breed a pest resistant high yielding specie.



ScanFuel

Q & A

Thank you for your attention!

Contact information



ScanFuel Ghana Ltd

Thor Hesselberg

Chief Executive Officer/Founder

Phone: +47 4500 3500 (Norway)

Phone: + 233 24 529 1609 (Ghana)

Email: th@scanfuel.com